

Fold-up Shelving



FOLDAWAY



RANGER
DESIGN

FOLDAWAY



Optional cargo rail allows you to secure your load safely.

Adjustable cable allows you to set the shelf to the ultimate angle.

Gas shocks hold the shelf firmly in an up or down position.

Aluminum extrusion gives the shelf the strength you need.

3 rubber bumpers ensure a quiet ride.

Complete unit shown weighs only 75 lbs / 34 kg allowing greater payload capacity.

Benefits

Efficient

Studies have proven that a well organized van can save a technician at least ten minutes per day. Ten minutes x 250 days = 40 hours. The time saved translates into substantial savings.

Custom Fit

Ranger's product line is constantly evolving to ensure we have the precise product application required for your vehicle. Proper fit translates into a better usage of the available work space.

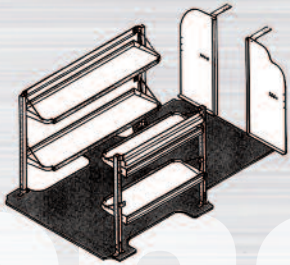
Strong

Ranger's fold-up shelving is built strong & durable. Using heavy-gauge 5052H32 aluminum. It will outlast the vehicle it is in, and can be transferred to a newer vehicle.

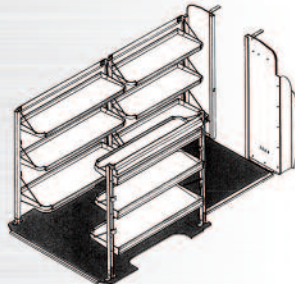


Accessories

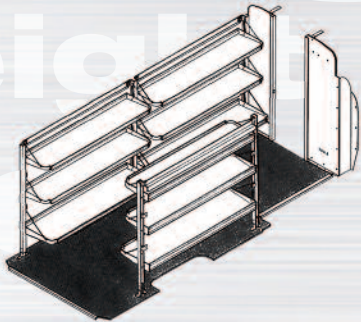
Packages



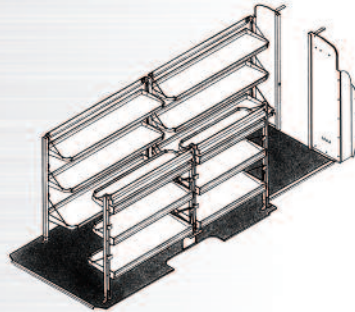
Package 831
FULL SIZE REGULAR VAN



Package 841
SPRINTER REGULAR



Package 842
SPRINTER MID LENGTH



Package 843
SPRINTER EXTENDED



84-5048
FIXED SHELF WITH
DIVIDER KIT



84-5111
WORKBENCH



84-5248
FIXED SHELF
WITH BIN KIT

Light weight

Ranger's fold-up shelving weighs only 75 lbs (48" – 3 shelves). This translates into substantial savings in fuel consumption.

Versatile

Ranger's fold-up shelving is very flexible and gives you the freedom to choose what you need, when you want it.

Quiet

With gas shocks and rubber bumpers, Ranger's fold-up shelving gives a quiet ride. This means a more pleasant environment for the occupants of the vehicle.



10 year Warranty

Made in North America by:



Ranger Design Inc.

19160 Cruickshank 94 Main Mill Street
Baie-D'Urfé, QC Plattsburgh, NY
H9X 3P1 12901

Tel.: 514-457-8181
Toll free: 1-800-565-5321
Fax: 514-457-8180

info@rangerdesigninc.com

Your Ranger Distributor: